

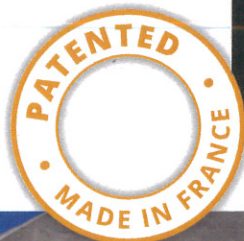
MLT

Minet Lacing Technology

THAMAN RUBBER CO

WWW.THAMANRUBBER.COM

NEW



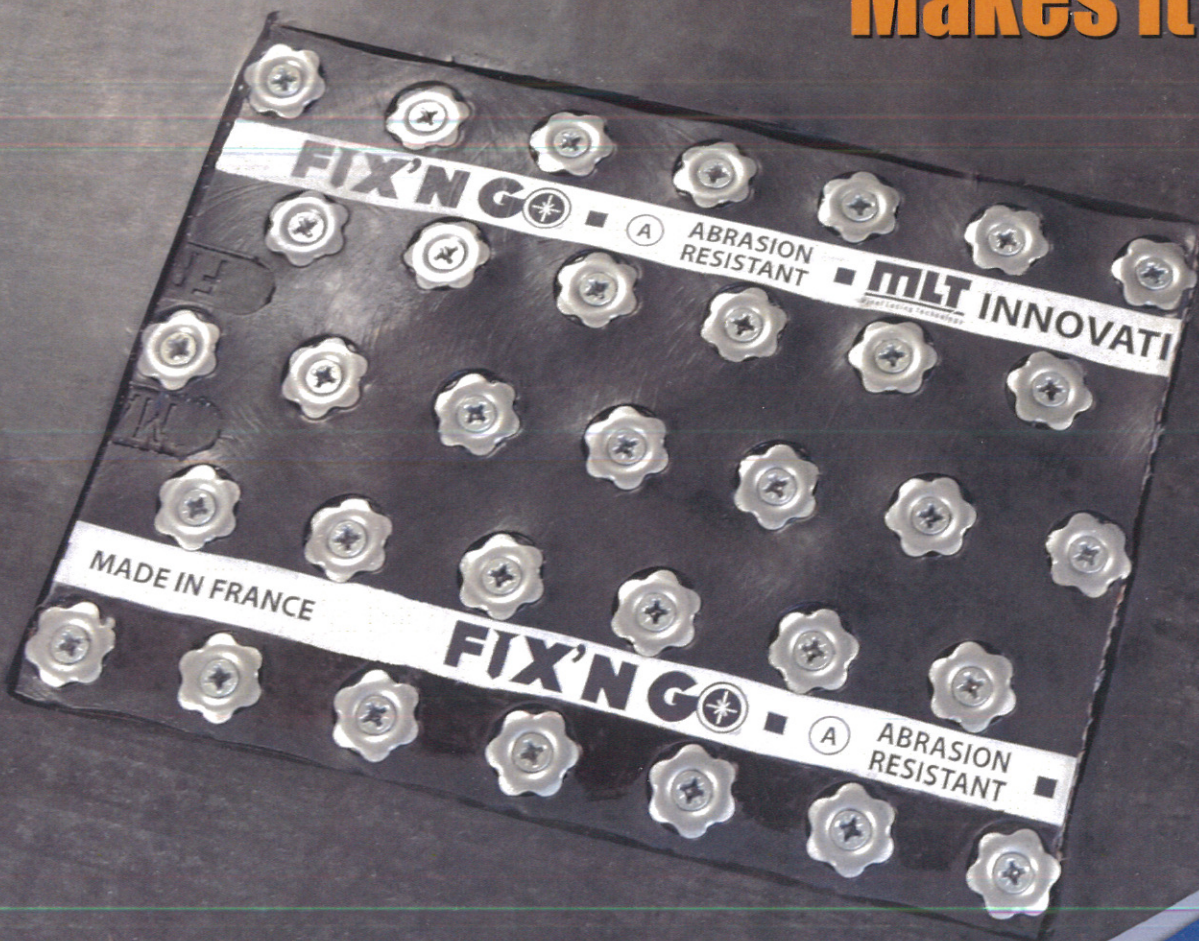
FIX'NGO

THE EASY SOLUTION TO REPAIR BELT RIPS & TEARS

Quick and Easy Installation Process

ONE Solution for All Applications

Makes it EASY!



What is it?

FIX'N GO



THE EASY SOLUTION TO REPAIR BELT RIPS & TEARS

Fix'N Go is an innovative and unique solution for repairing belt rips and tears.

Thanks to the 50 mm³ rubber used, **Fix'N Go** has a higher abrasion resistance than most of your conveyor belts used without impacting its flexibility, resistance to elongation and tensile strength.

By repairing your belt with **Fix'N Go**, you get a quick and long term permanent solution. No need to replace it.

MLT specific screws are self-drilling and self-tapping: they spread the carcass threads without cutting them.

INSTALLATION TOOL



Battery, pneumatic or electric screwdriver

Technical Characteristics

AVAILABLE VERSIONS

- Anti-Abrasion and Heat Retardant
- Carbon steel inserts and screws

Width: 158 mm/6¼"

Thickness top plate: 3 to 4 mm

Thickness bottom plate: 2 to 3 mm

Quantity of screws per meter: 150

PACKAGING

- Available in boxes of 2 meters or 20 meters, with screws

INSTALLATION TOOLS

- Battery, electric or pneumatic operated drill or screwdriver
- Belt skiver

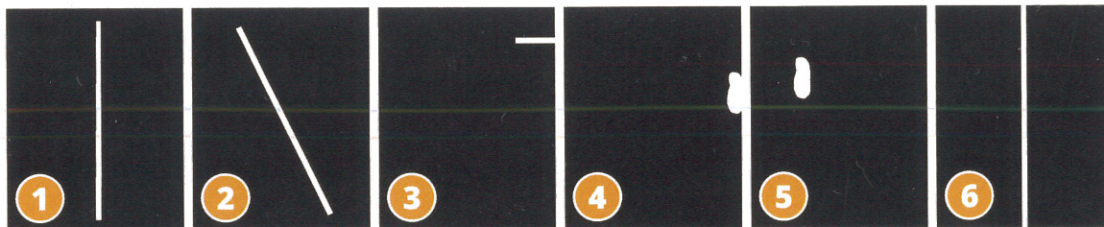


When to Use FIX'N GO



Need more information?
Please visit our website

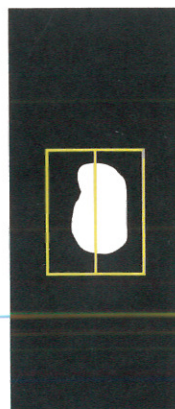
www.mlt-lacing.com



LEGEND

- Conveyor Belt
- Hole/Tear
- ▭ Fix'N Go
- Screws

- 1 Longitudinal tear
- 2 Transverse tear <50% of on width of the belt. **Fix'N Go** must remain 20% on the belt width of each side of the tear
- 3 Band edge tear <20% of the width of the belt
- 4 Hole up to 10 cm wide along the belt edge
- 5 Hole up to 20 cm wide
- 6 Joining of two belts lengthwise



If larger hole than Fix'N Go:

- Put side by side **Fix'N Go**.
- These pieces will be installed along the direction of travel.



When longitudinally joining two belts:

- Screw every 50 cm on each band.
- Alternate screwing pattern over the entire length.

FIX'N GO Installation Method

NECESSARY MATERIALS

- 1 drill
- 1 skiver with blades 2.5 and 4.5 mm
- Belt marking pen
- Knife



Your Belt Is Damaged?

IMPORTANT

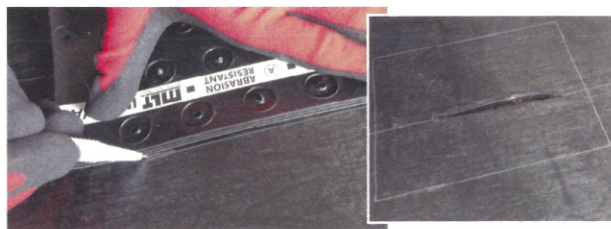
- Always cut the **Fix'N Go** following the steps in the photos
- The installation is completed on a solid work station



ON THE UPPER FACE...



Cut your **Fix'N Go** so that there is at least one row of screws around the tear. SEE BOX ABOVE.



Cover tear or hole with top part of **Fix'N Go**. Mark the outline with a pen.



Cut the outline while maintaining the integrity of the carcass.



Skive the area marked by the outline, being careful not to cut the carcass.



Insert 2 long screws provided with the kit.



Align bottom of **Fix'N Go** with the 2 long screws.

ON THE LOWER FACE...



DRAW

Mark the outline of the **Fix'N Go** using a rubber pencil.



REMOVE COVER

Remove the long screws.



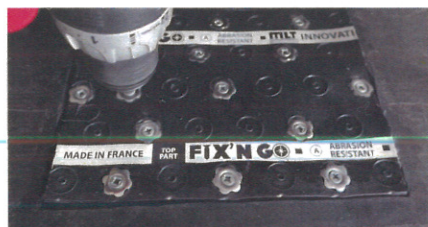
CUTTING

Cut the outline while maintaining the integrity of the carcass.

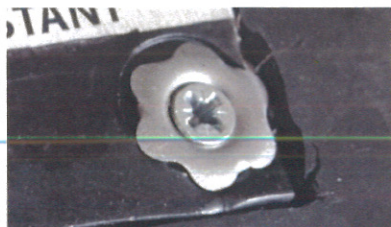


SKIVE

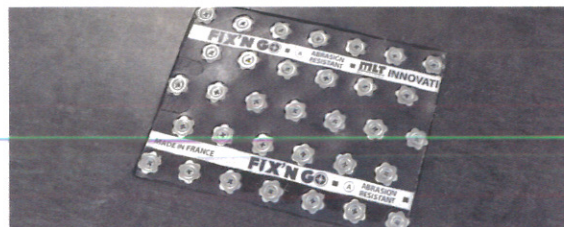
Skive the bottom cover with the 2.5 mm blade.



Secure bottom of the **Fix'N Go** by installing all the screws alternating sides and rows.



The four corners are installed last.



THE BELT IS REPAIRED!

Super-Screw® Lacings
ready to go down in mine

RV6 Fastener

Our products are Made in EU

MADE IN
EU



Quality Products
Simplified Work



ISC® Belt

ISC Belt

MR Fastener

Super-Screw Lacing

Super-Screw Lacing

Belt Skiver

Bolt Plate Fastener

Fix'N Go

