



WWW.THAMANRUBBER.COM

WS 2.10

THAMAN

RUBBER CO

WWW.THAMANRUBBER.COM

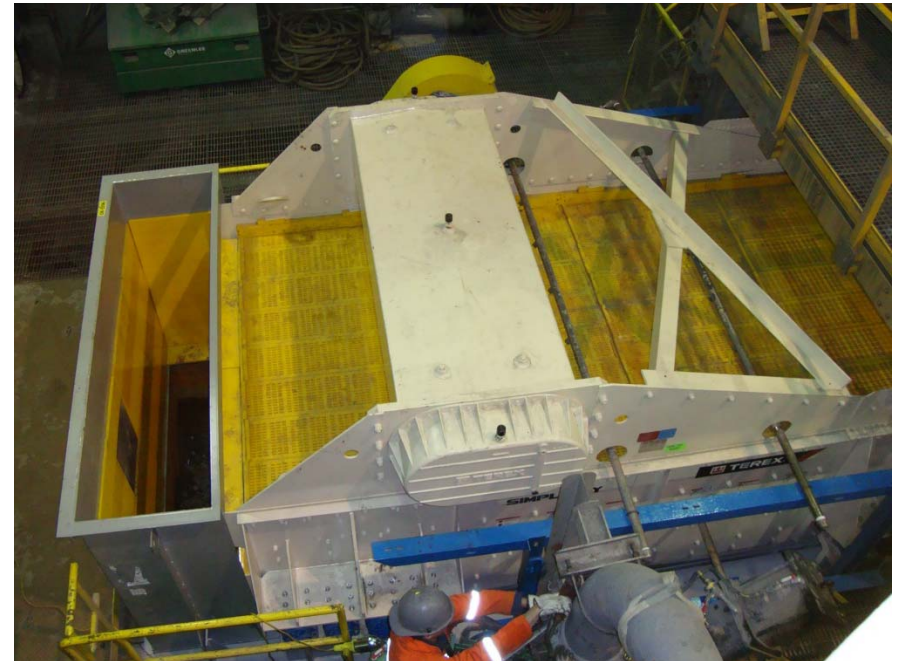
- 82 Durometer "A" Material
 - Wet applications
 - Less abrasive material
 - Sliding abrasion
- 75 Durometer "A" Material (Hybrid)
 - Wet/Dry applications
 - Slight impact resistance
 - Sliding abrasion
- 60 Durometer "D" Material
 - Dry applications
 - Impact applications
 - Abrasive Material
 - Better adherence on vibrating equip.



THAMAN RUBBER CO

WWW.THAMANRUBBER.COM

- Chute Liners
- Feed & Discharge lip liners
- Tube Covers
 - Eccentric tube
 - Torque tube
 - Can fit any pipe down to a 4" diameter
- Frame Protectors
 - Feed side & Top
 - Round cross members
- Screen side Liners (not to hold down panels)
- Skirt board Liners
- Vibratory Pan Liners
- Ceramics
- Misc liners.



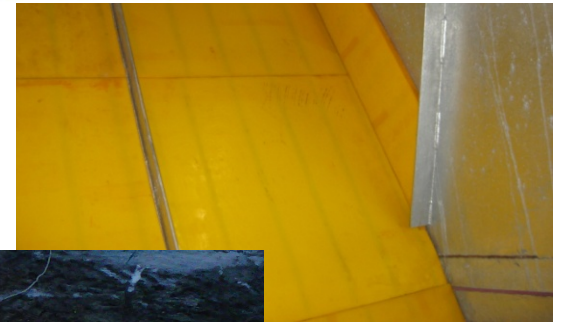
THAMAN RUBBER CO

WWW.THAMANRUBBER.COM



Thickness ranges from 15mm to 70mm

Liners are designed for custom fit to avoid any cutting and maximum holding power.



Liner with wear bars molded in for added wear resistance for severe applications.



WWW.THAMANRUBBER.COM

Lip liners are usually made in multiple pieces to allow for rotation as wear occurs.



Thickness typically ranges from 15mm to 50mm.



We recommend installing a “stop” at the discharge of the liner to prevent migration.



THAMAN RUBBER CO

WWW.THAMANRUBBER.COM



Thickness of 15mm and 20mm.
Wrap as small as 4" diameter.
Liners are formed for smaller diameter pipes



Liners 10" diameter and under are formed.



THAMAN RUBBER CO

WWW.THAMANRUBBER.COM

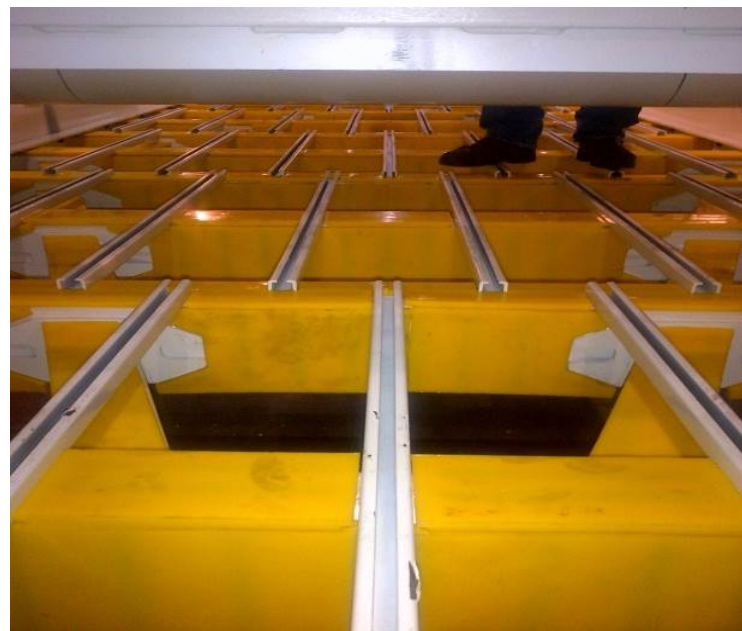


Mostly 15mm thick.

Cover the feed end face and top on a incline screen.

Cover the top extended approx. ½" on each side for a horizontal.

Also applicable for round cross members.



THAMAN **RUBBER CO**

WWW.THAMANRUBBER.COM

Chamfer can be on either side of magnets.

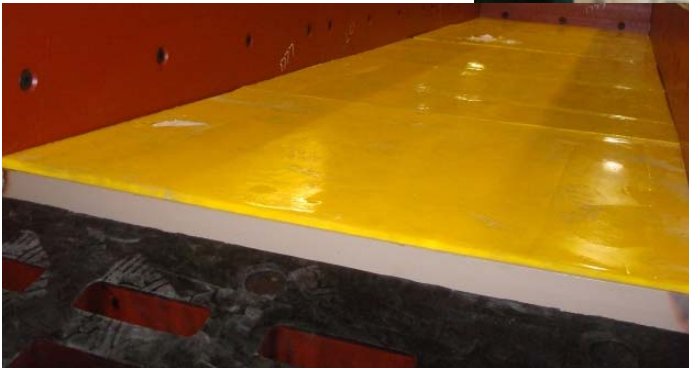


THAMAN

RUBBER CO

WWW.THAMANRUBBER.COM

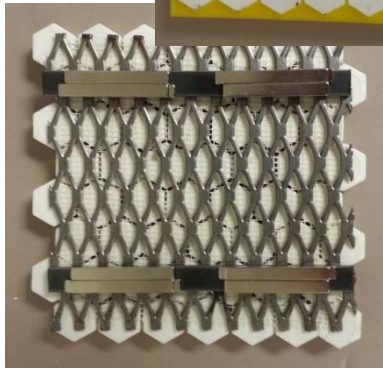
Thickness ranges from 20mm to 70mm



THAMAN RUBBER CO

WWW.THAMANRUBBER.COM

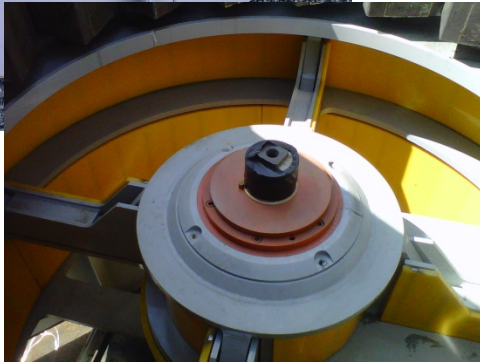
Ceramic – ½” thick hex tile



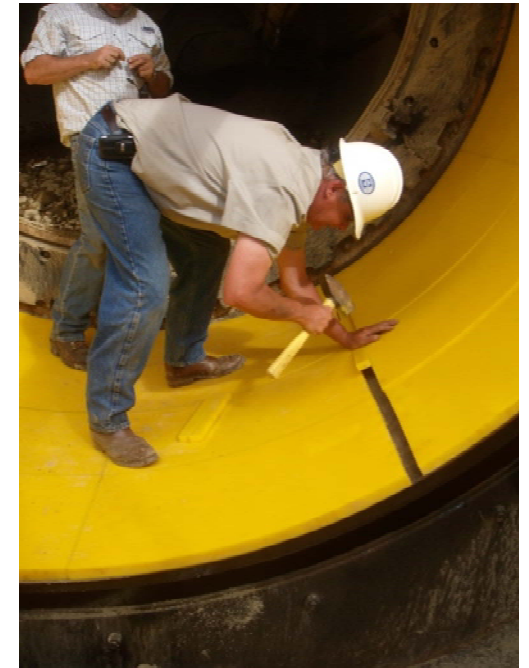
THAMAN RUBBER CO

WWW.THAMANRUBBER.COM

Spray hole covers
Tube cover housing



VSI crusher application



THAMAN

RUBBER CO

WWW.THAMANRUBBER.COM

- No welding
- No torching
- No toxic fumes
- Smaller modular parts
- Access for installations required to wear surface only
- PU does not initiate combustion (**FLAMES!!**) like rubber
- Confirmed noise reduction



THAMAN RUBBER CO

WWW.THAMANRUBBER.COM

- No bolting
- No welding
- No torching
- Minimal tools required
- Fewer man hours
- Easy rotation of modular parts

