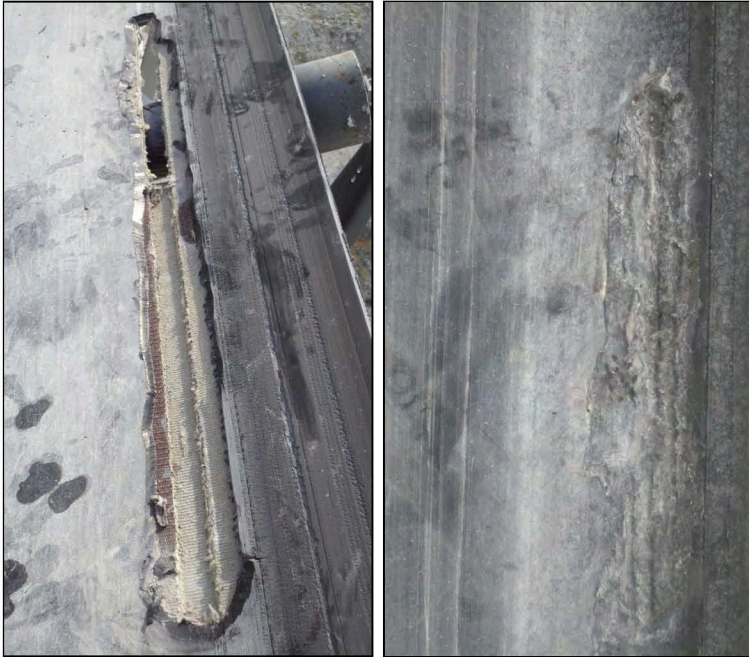


Made in the USA

# RUBBERLOC™

## Conveyor Belt Repair



**Above:** Primary belt in aggregate quarry with a cut-through hole.

**Right:** After 27 months, RubberLoc repair still holding strong.

RubberLoc conveyor belt repair is a long-lasting permanent patch system specifically formulated for rapid cure time and aggressive adhesion. Excellent abrasion resistance allows for long-lasting repairs, giving dramatic increases to conveyor belt service life. RubberLoc belt repair can be used on longitudinal cuts, skid board abrasion zones, and thru holes. This two-component material is unaffected by oil, grease and water, providing uncompromised solutions in the toughest environments. Each kit contains 750 grams (1.5 pints) of product, surface cleaner and adhesion primer along with brush, application trowel, stir-stick and application instructions. RubberLoc has a rapid cure time, allowing for normal use of conveyor belt in as little as one hour.

Preparation includes roughing the surface of the belt area needing repair with a rough rasp or slow speed grinder.



### RubberLoc Data

<b>Tensile Strength</b>	<b>6895 PSI</b>
<b>Elongation</b>	<b>417%</b>
<b>100% Modulus</b>	<b>1176 PSI</b>
<b>Tear Strength</b>	<b>963 lbs x ft/in</b>